

Interdisciplinary Implementation:

Inpatient Psychiatry Hepatitis C Screening and Education

D. Hoch MA, A. Kablinger MD, L. Dishner MSN, MHA, RN-BC, W. Rea MD, M. Rubio MD
 Departments of Gastroenterology and Psychiatry and Behavioral Medicine, CC

Background

- Process improvement grant integrating Gastroenterology and Psychiatry.
- Purpose: Screen, educate and link Hepatitis C (HCV) positive individuals.
- CDC recommendations: screen *baby boomers* (born between 1945-1965) and other *populations at high risk* for HCV: Intravenous Drug Users (IDU), those with other infectious diseases and/or history of risky sexual behavior, incarceration and/or non-regulated tattoos.
- Carilion Clinic's acute, adult psychiatry inpatient unit is the *first psychiatric unit in the USA* to routinely screen for HCV upon admission.
- Approximately 75% of psychiatric admissions have substance use disorder as a primary or secondary diagnosis, including a large proportion of IDU patients.



Methods

- Development of a unique reflex lab screening (HCCR) and involves reflex screening from HCV Antibody (AB) to HCV Viral Load (VL) to Hepatitis B (HBV) and HIV
- Admission order set integration with opt out
- Integration of educational sessions
- Twice weekly group sessions for acute patients with mental illness
- Continual provider/resident/student/nursing/social work education

Conclusion

- Interdisciplinary screening and education for Hepatitis C of acutely ill patients in psychiatric crisis is attainable and provides a method of educating all members of the health care team, symbolizing the mind/body care focus of today's medical community.

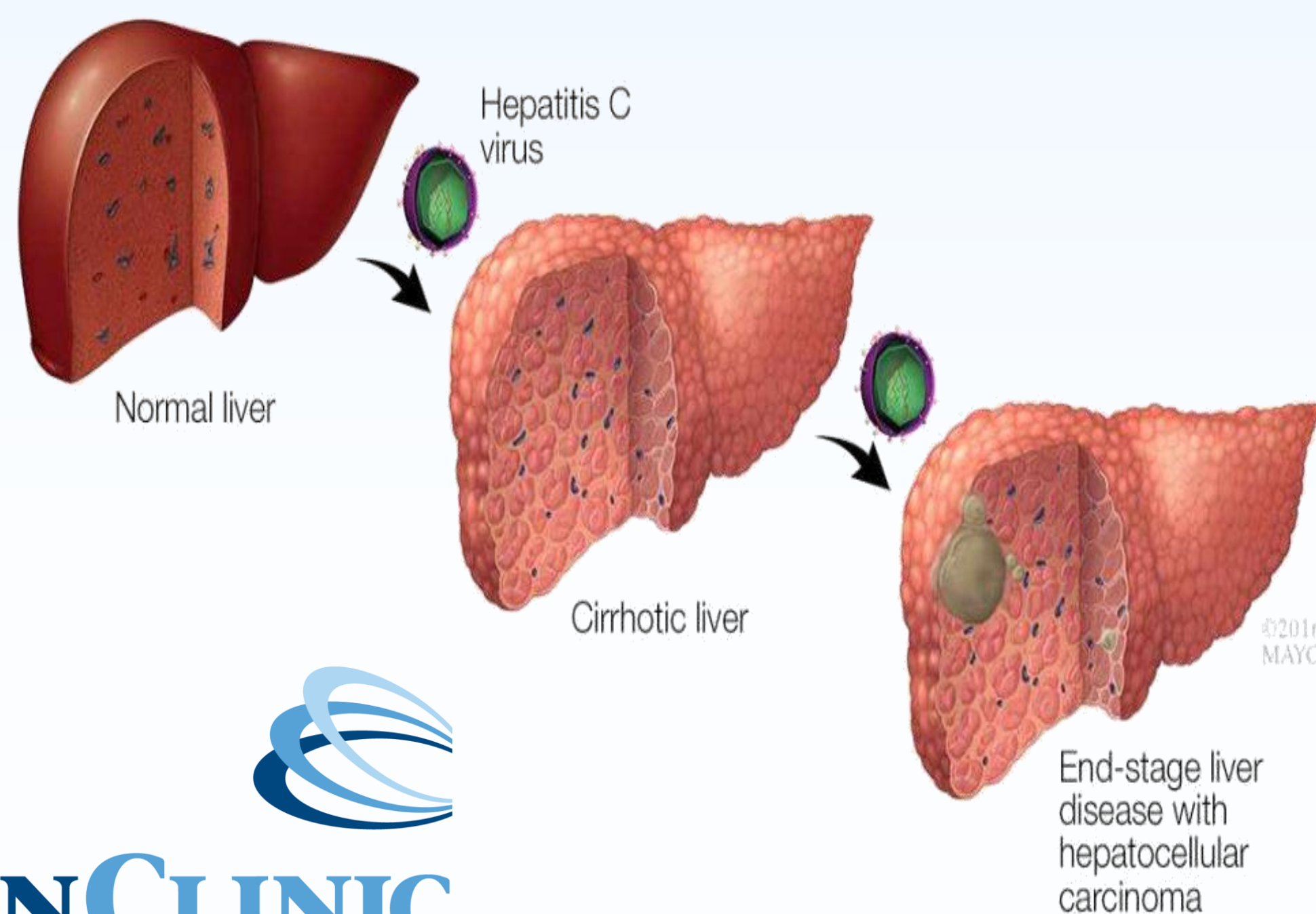
References

- The FOCUS Program and Inpatient Psychiatry, poster presentation at Carilion Nursing Day 2019
- Engagement in Group Psychotherapy Among Marginalized Individuals with Hep C, International Journal of Group Psychotherapy, Dodd et al 2016 DOI: 10.1080/00207284.2016.1149410
- [A nursing workforce education program to support Australia's Hepatitis C elimination goal.](#) Dawson, Olivia; Hassall, Melinda. *Australian Nursing & Midwifery Journal*. Apr-Jun 2019, Vol. 26 Issue 6, p48-48. 1p.
- Data on file, Depts of Gastroenterology, Psychiatry and Behavioral Medicine

Results

4/2018-9/2019	IM	Psych	Total
Percentage of patients tested for Hep C AB	76.97%	86.22%	81.60%
Seropositivity Rate: Percentage of positive antibodies	2.43%	10.97%	6.70%
Confirmed positivity rate (VL positive)	1.11%	7.08%	4.10%
Linkage Rate	84.00%	63.00%	73.50%
Percentage of patients that did not show to their appointment	32.00%	47.25%	41.84%

- >175 provider education sessions
- ≈150 patient education groups on the inpatient unit for 605 unique individuals
- Groups are well received by both staff and patients



CARILION CLINIC