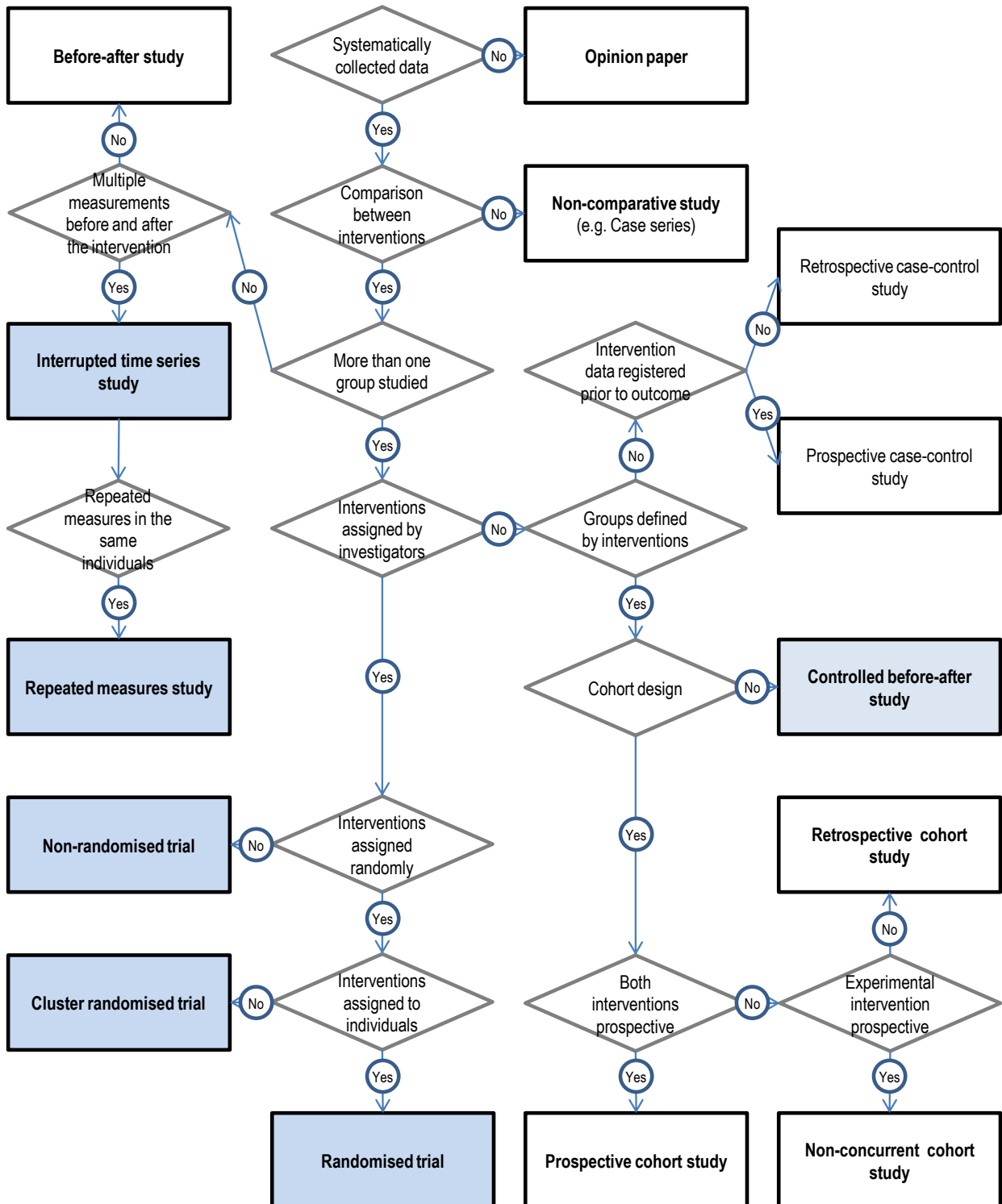


Study designs for evaluating the effects of healthcare interventions

(Shaded boxes are study designs that should be considered for inclusion in EPOC reviews.)



Suggested citation: *Cochrane Effective Practice and Organisation of Care (EPOC). What study designs can be considered for inclusion in an EPOC review and what should they be called? EPOC Resources for review authors, 2017. Available at: <http://epoc.cochrane.org/resources/epoc-resources-review-authors>*